



ADD 1: No. 1 Wanguo Market, Mashe Village, Lishui Town, Nanhai, Foshan, Guangdong, China.
ADD 2: Gaotian Road, Mingcheng Town, Gaoming District, Foshan, Guangdong, China



0757-85653728



400-0757-836



0757-85653718



<https://www.tpahousing.com/>
<https://tpaprefab.en.made-in-china.com/>
<https://www.lightsteelstructurebuilding.com/>
<https://fstianpuan.en.alibaba.com/>



Foshan Tianpuan Building Materials Technology Co., Ltd.



STEEL STRUCTURE ENGINEERING

www.tpahousing.com

Foshan Tianpuan Building Materials Technology Co., Ltd.



Company profile

We, TPA HOUSING(Foshan Tianpuan Building Materials Technology Co., Ltd) have 15 years of extensive manufacturing experience in the steel structure construction industry and have production Factories in Lishui Town and Gaoming Town in Foshan City covering about 20000 square meters.

We specialize in a wide range of products, including steel structure warehouses, factories, sheds, garages, and modular houses. Our products are known for their variety, reliable quality, durability, reasonable pricing, and stylish design. They have gained widespread recognition and trust from our customers, meeting the ever-changing economic and social demands.

We would love to have the opportunity to connect with you. We aim to be a valuable business partner and establish a long-term cooperative relationship. Please don't hesitate to reach out to us for further business inquiries and shared success!

Our Processing Workshop

Production Line:

- 1)CNC cutting the exact size for different types of steel plates
- 2)Connection plates production drilling holes
- 3)H beam assemble: Riveting and welding
- 4)Submerged arc welding H beam
- 5)H-beam Straightening
- 6)Connection parts welding on the steel structure frame
- 7)Steel structure frame shot blasting(Sanding 2.5)
- 8)Spray painting(the color follow the customer requirements)





Steel structure

The steel structure is a third generation building. It uses H shaped steel and thin walled cold formed C and Z shaped steel to form an architectural skeleton. Its roof and wall are color coated steel sheeting or Sandwich panel color steel. The steel structure work has basically replaced the traditional reinforced concrete building in the developed world. It has the advantages of light weight, a large span, less materials, low construction costs, saving foundations, a short construction period, safety, reliability, an attractive appearance, etc.

Steel structure works are widely used as single storey industrial factory buildings, warehouses, commercial buildings, office buildings, multi storey car parks, residential buildings and other buildings.

Steel Structure Warehouse



Steel Structure Warehouse
For Industrial Zone

Steel Structure Workshop



Steel Structure Multi Storey Building

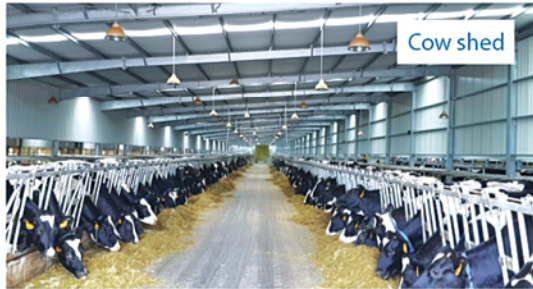


Applications:

- a. Office building
- b. Hotel building
- c. Commercial buildings
- d. Shopping mall
- e. Residential house
- f. Apartment



Steel structure Fabrication



Cow shed



Airplane Hanger



Horse training field



Outdoor stadium shed

Steel Structure Warehouse

Location: Davao, Philippines

Area: 9855 square meters

Weight: 315 tons

Wind load: 137km/h

Anti-seismic: 8 grade

Roof dead load: 0.25kn/m²

Roof live load: 0.4kn/m²



Steel Warehouse With Mezzanine

Location : Doha, Qatar

Roof dead load: 0.35 kN/m²

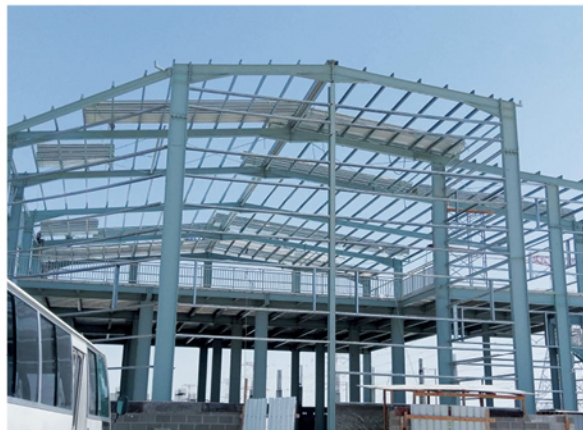
Roof live load: 0.5 kN/m²

Floor dead load: 3 kN/m²

Floor live load: 10 kN/m²

wind load: 110 km/h

Anti-seismic: 7 grade



Steel Structure Processing Workshop



Location: Guangdong, China

- Specification: 103.8m x 45m x 14m (H) --4671 square meters
- Structure Fabrication: Cut, Drilled, Assembled, Welded, and Painted.
- Features: Assemble Quickly, Affordable, Durable, Clear Span Interiors

Steel Bar Production Workshop

Location:Guangdong, China

Area: 19880 square meters
Weight: 700 tons
Wind load:130km/h
Anti-seismic: 8 grade
Roof dead load: 0.25kn/m²
Rooflive load: 0.4kn/m²



Steel Structure Chicken House

Location: Gdansk, Poland

Hot Dip Galvanized Steel Structure Chicken Farm Building
-Area:2737m²
-Specification: 149.66m x 18.29m x 3.62m (H)
-Durable Structures: Q355B, Q 235B
-Structure Fabrication: Cut, Drilled, Assembled, Welded, and Hot-dip Galvanized



Two-Storey Steel Structure Building

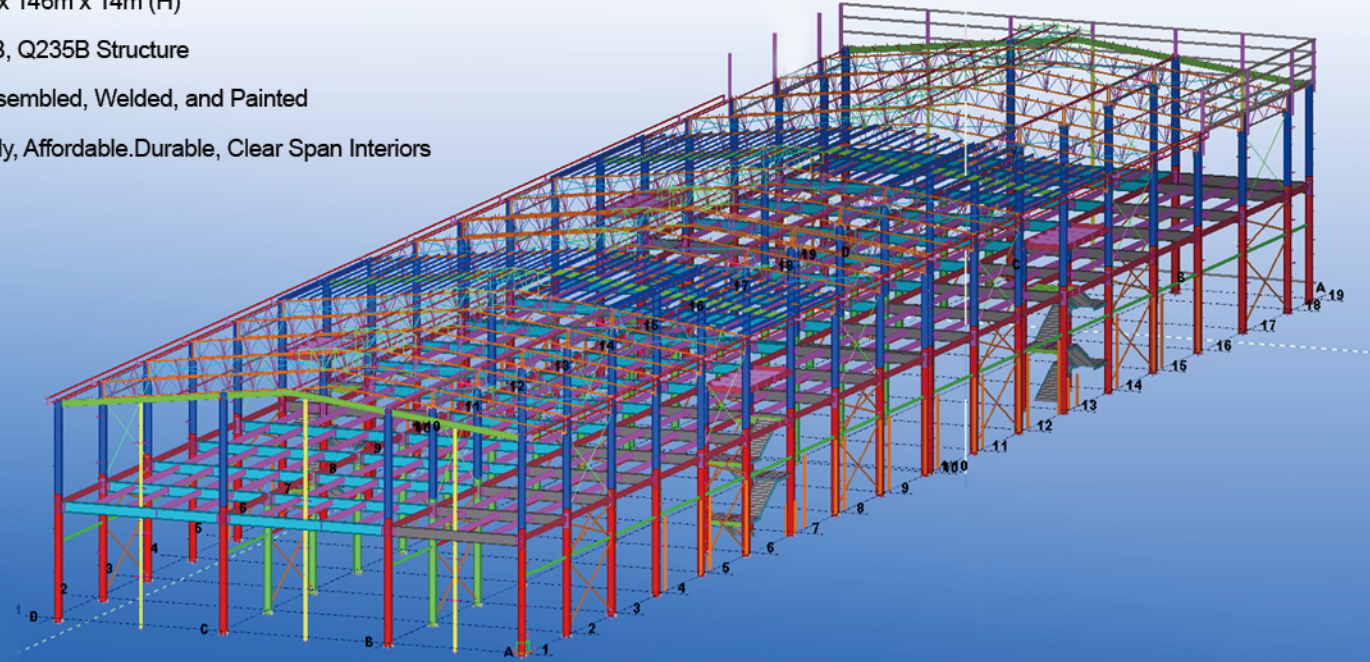
Location: Guangdong, China

Building Specification: 36m x 146m x 14m (H)

-Durable Structures: Q355B, Q235B Structure

-Fabrication: Cut, Drilled, Assembled, Welded, and Painted

-Features: Assemble Quickly, Affordable, Durable, Clear Span Interiors

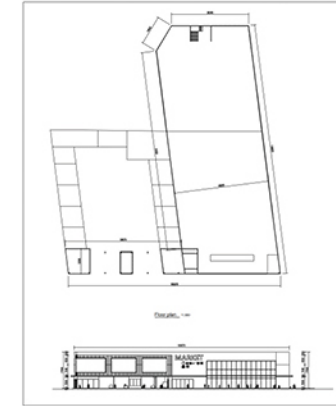


Multi-Storey Commercial Building

Size: 101.87 x 100.37 x 17.10m

Storey: 3-floor

Application: Commercial Center, Shopping Mall, Exhibition Hall



Steel Structure Modular House

Location: Rotterdam, Netherlands

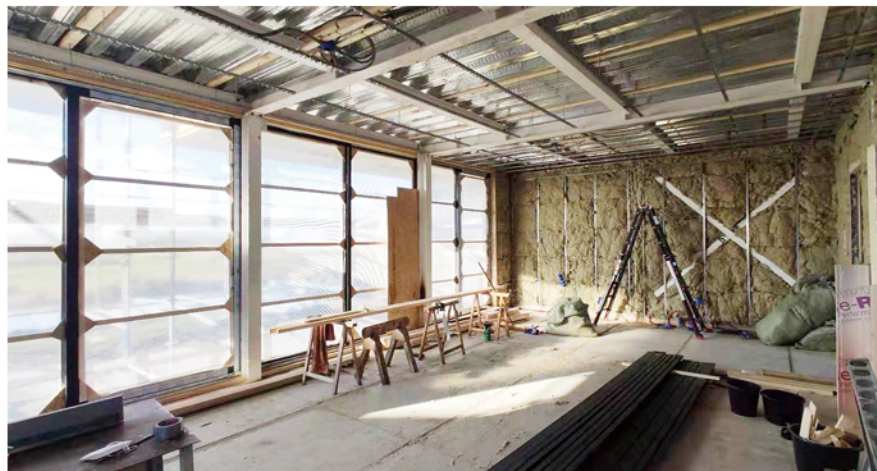
Bearing capacity: 300kg/m²

Wind load: 110km/h

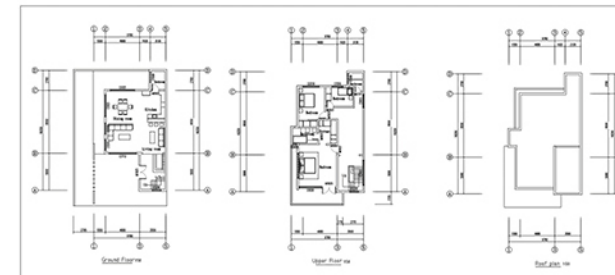
Roof live load: 0.3kn/m²

Roof dead load: 0.25kn/m²

Floor load: 300kg /m²



Two-Storey Modular House



Ground floor: 97.7 m²

Second floor: 150.4 m²

Total Building Area: 248.1 m²

House layout: 1 suit room, 2 bedrooms, 1 living room, 1 dining room, 2 bathrooms, 1 storage room, 1 kitchen

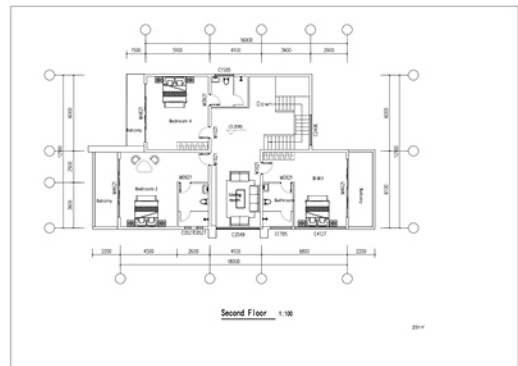
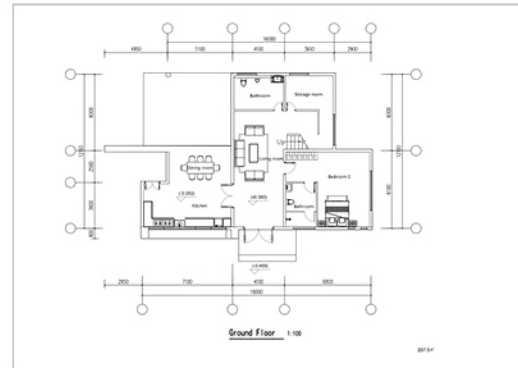
Two-Storey Modular House

Ground floor: 207.5 m²

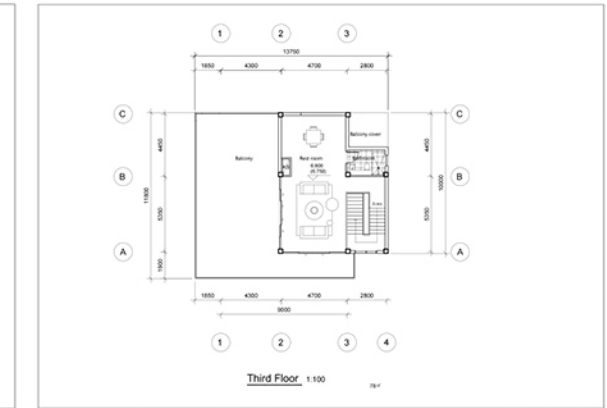
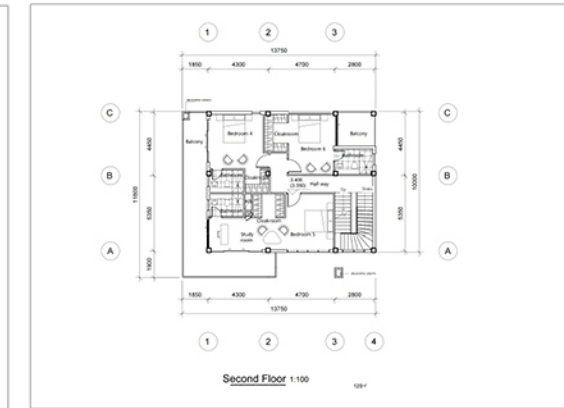
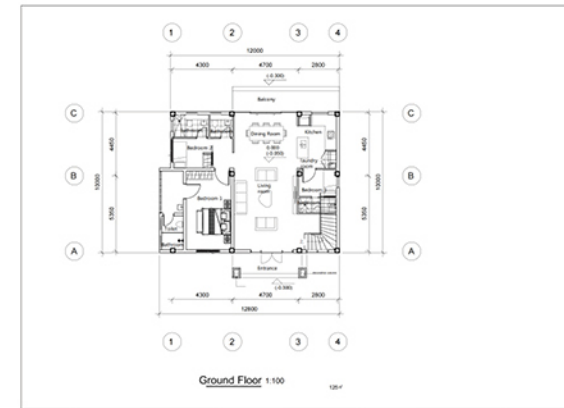
Second floor: 231 m²

Total Building Area: 438.5 m²

House layout: 4 suit rooms,
2 living rooms, 1 dining room, 1 bathroom,
1 storage room, 1 kitchen



Three-Storey Modular House



Ground floor: 125 m²

Second floor: 120 m²

Third floor: 78 m²

Total Building Area: 323 m²

House layout: 4 suit rooms, 2 guest rooms, 1 living room, 1 dining room, 2 bathrooms, 1 kitchen, 1 rest room